



# COATINGS AND FINISHES CATALOG



# COATINGS

The standard tolerable variation in fabric color tones from one print run to another is 10%. Check physical samples with our resellers and/or representatives.

## Polyester (POL)



Royal Red (192)



Red (049)



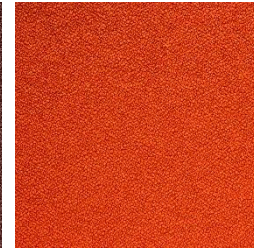
Dark Red (043)



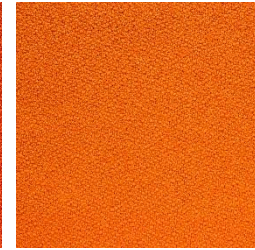
Violet (185)



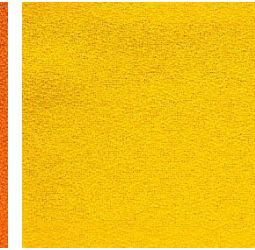
Brown (184)



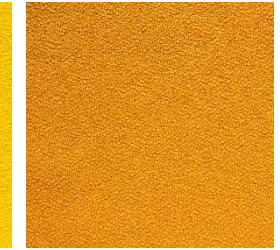
Tangerine (172)



Orange (252)



Yellow (258)



Royal Yellow (193)



Old Rose (251)



Fendi (134)



Light Gray (253)



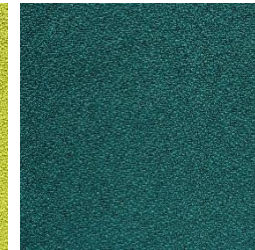
Ocre (177)



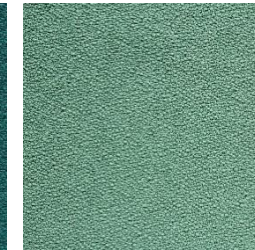
Avocado (254)



Pistachio (181)



Green (048)



Green Water (186)



Green Moss (094)



Blue (091)



Dark Blue (045)



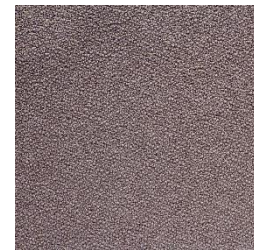
Medium Blue (255)



Old Blue (256)



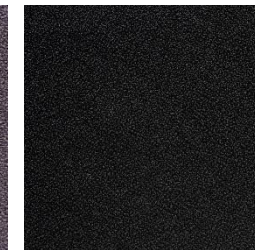
Soft Gray (173)



Gray (168)



Graphite (257)



Black (046)

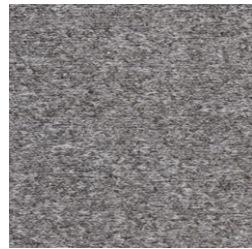
# Polytex (PLX)



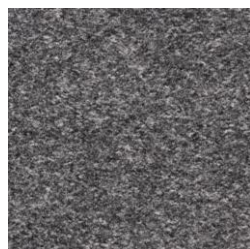
Cappuccino (403)



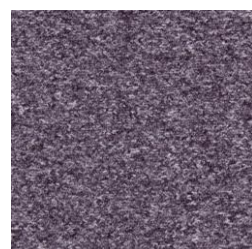
Brown (400)



Metal Grey (402)



Dark Grey (404)



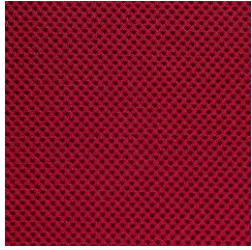
Lilac (401)



Black (406)

# Space (ST)

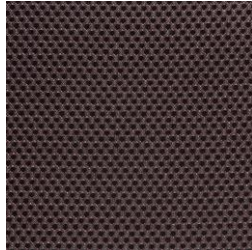
---



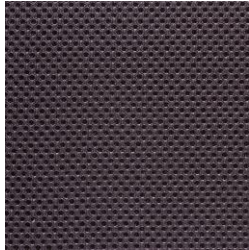
Red (160)



Blue (155)



Brown (156)



Gray (164)



Black (161)

# Vinyl (VNL)

---



Red (130)



Terracotta (121)



Yellow (124)



Beige (020)



Olive Green (191)



Brown (126)



Sky Blue (125)



Dark Blue (127)



White (131)



Gray (133)



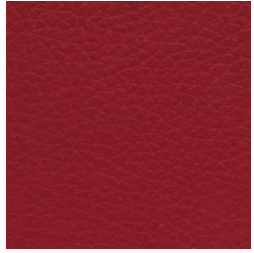
Black (132)



Graphite (195)

## Ecological Leather (CEC)

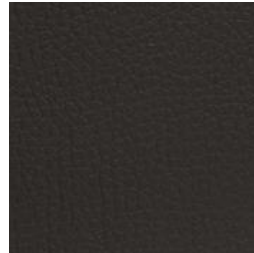
---



Red (086)



Wine (233)



Brown (087)



Beige (080)



Fendi (194)



Green (315)



Blue (314)



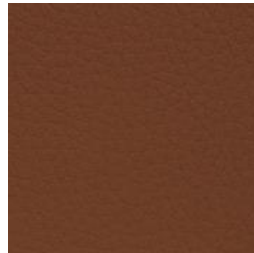
White (085)



Gray (175)



Black (082)



Caramel (603)

## Natural Leather (COU)

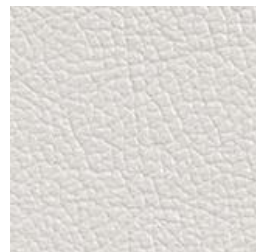
---



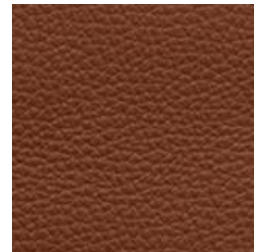
Brown (055)



Black (056)



White (057)

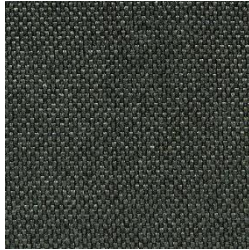


Caramel (259)

## Polyester Blend (MSC)



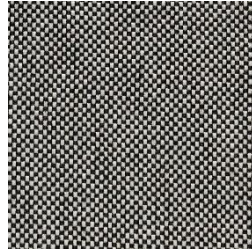
Dark Red with  
Black (213)



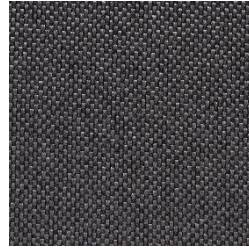
Green with Black (211)



Blue with Black (212)



Gray with Black (209)



Graphite with  
Black (210)



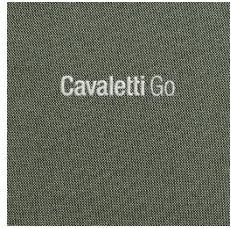
# GO Coatings

| COATING         | CLEAN | SEAMS |
|-----------------|-------|-------|
| Polyester       |       | ■     |
| Polyester Blend | ■     | ■     |
| Vinyl           |       | ■     |
| CEC - Stilo     |       | ■     |
| Polytex         |       | ■     |
| Grid            |       | ■     |
| Grani           |       | ■     |

## CLEAN



Clean



## SEAMS



Diamond Seams



Random

## Colors Thread Standards

Polyester Blend Only



Blue with Black / Light Blue Thread (212)



Graphite with Black / Green Thread (210)



Green with Black / Yellow Thread (211)



Gray with Black / Green Thread (209)



Dark Red with Black / Pink Thread (213)

\*NOTE: For other coverings, the line matches the color of the fabric.

# Liv

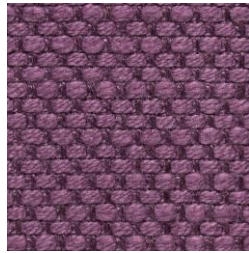
---



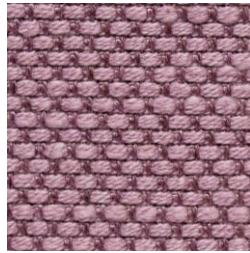
Ruby (506)



Jaspe (507)



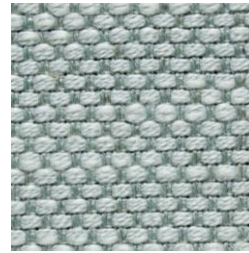
Amethyst (508)



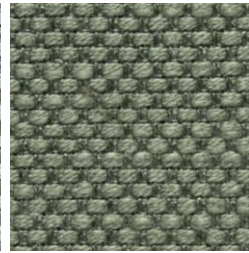
Quartz Rose (509)



Sandstone (500)



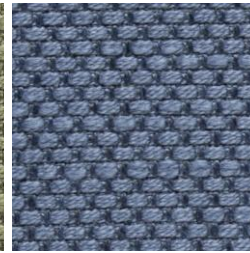
Turquoise (502)



Jade (511)



Emerald (510)



Sapphire (512)



Petroleum (505)



Limestone (515)



Basalt (513)



Nickel (514)



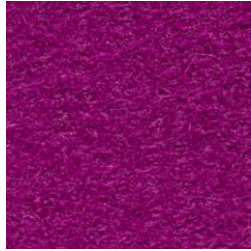
Carbon (504)

# Haven (HAV)

---



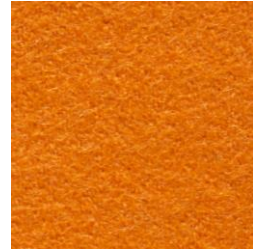
Red (550)



Magenta (551)



Terracotta (552)



Orange (553)



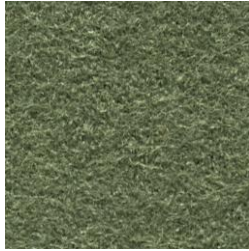
Yellow (554)



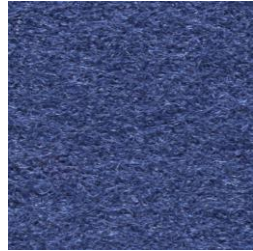
Snow White (555)



Green Field (556)



Green Savannah (557)



Twilight Blue (558)



Sky Blue (559)



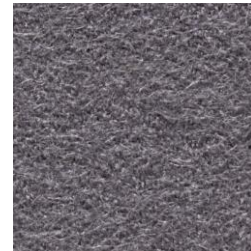
Sand (560)



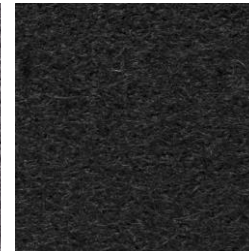
Ground Brown (561)



Concrete (562)



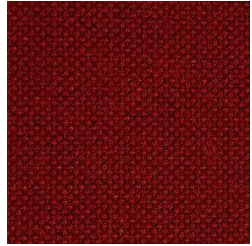
Asphalt (563)



Black (564)

# Grid

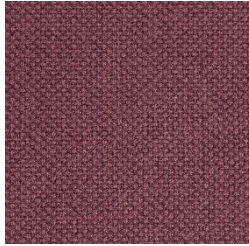
---



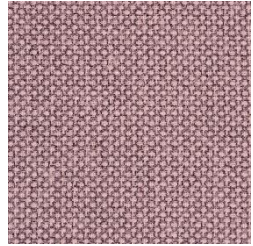
Persian Red (350)



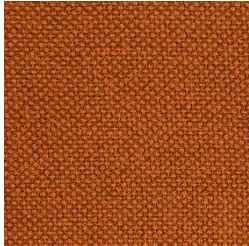
Pitaya Pink (359)



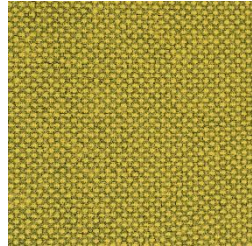
Mauve Pink (358)



Camellia Pink (351)



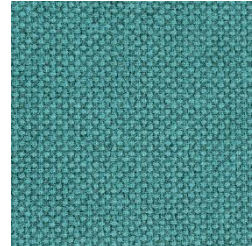
Amber Orange (361)



Sicilian Yellow (356)



Forest Green (357)



Caribbean Blue (353)



Infinite Blue (354)



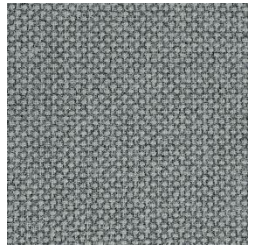
Cobalt Blue (363)



Ivory Beige (360)



Hazel Brown (362)



Mist Gray (352)



Titanium Gray (355)

# Grani

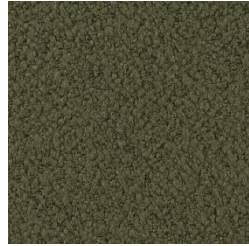
---



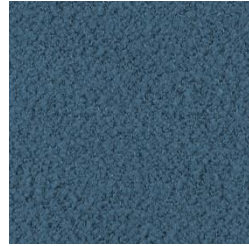
Ruby Red (287)



Nude Antico (286)



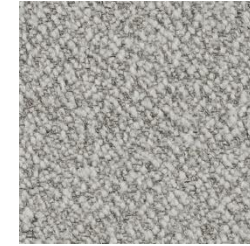
Green Ubatuba (284)



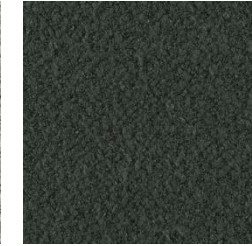
Norwegian Blue (285)



Beige Dune (283)

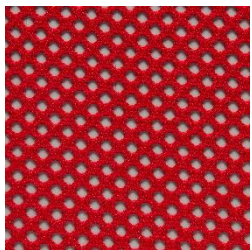


White Icarai (281)

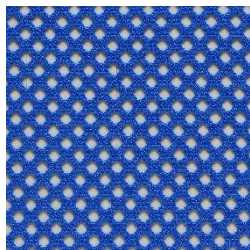


Noble Gray (282)

## NewNet Mesh



Red (163)



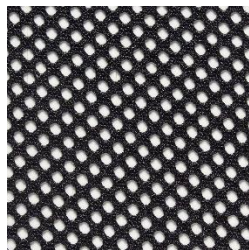
Blue (188)



Brown (187)

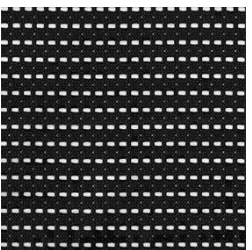


Gray (165)

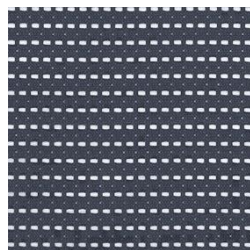


Black (162)

## Air Mesh

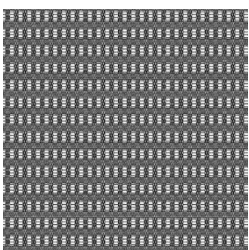


Black

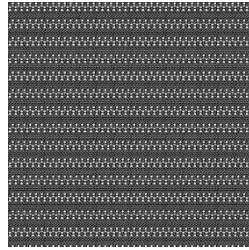


Gray

## C3 e C4 Mesh



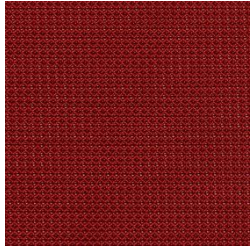
C3 Black



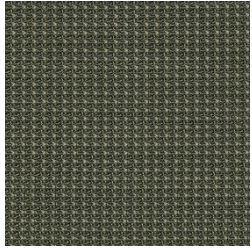
C4 Black

## V2 Mesh

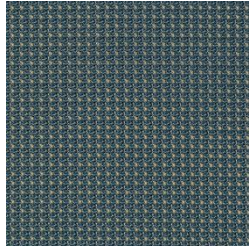
---



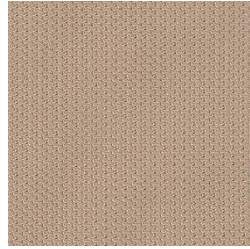
Red (309)



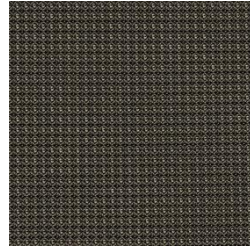
Olive Green (294)



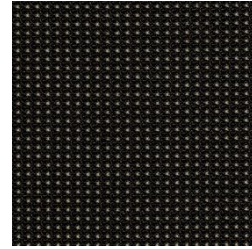
Blue (303)



Metal White (307)



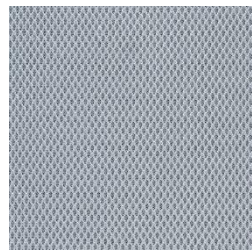
Graphite (308)



Black (300)

## Flip Mesh

---



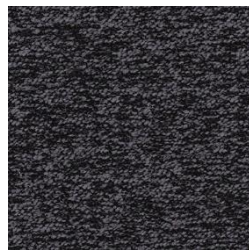
Gray (601)



Black (600)

## Aura Mesh

---



Fabric



Black Mesh

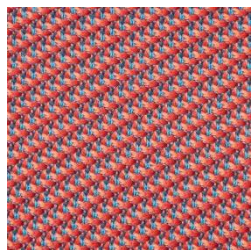


Gray Mesh

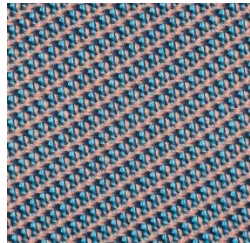
# Mimic Mesh

---

**\*Exclusive Mesh for Raya**



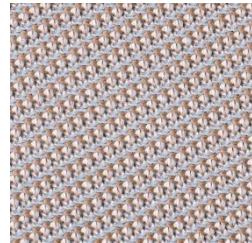
Coral Red (650)



Mediterranean Blue(651)



Mist Gray (652)



Nude Pearl (653)



Abyssal Black (654)







# FINISHES

Check compatibility with your product model and physical samples with our resellers and/or representatives.

## Plastics GO

---



White Off (44)



Black (06)



Graphite (45)



Gray (41)



Red Apple (43)



Orange (33)



Yellow (60)



Lime Green (40)



Navy Blue (42)

\*NOTE: For covers and upholstery, see coverings on page 09.

## Plastics Viva

---



White (02)



Black (06)



Gray (12)



Light Red (31)



Orange (33)



Yellow (16)



Green Lemon (27)



Green (28)



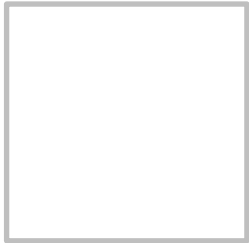
Blue (34)



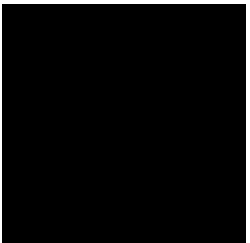
Dark Blue (30)

## Plastics Viva (SPM)

---



White (02)



Black (06)



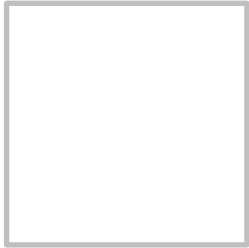
Light Red (31)



Blue (34)

## Plastics Stay

---



White (02)



Black (06)



Gray (41)



Brown (46)



Cherry Red (38)



Orange (33)



Lime Green (40)



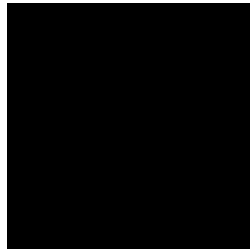
Navy Blue (42)

# Plastics Joy

---



White Off (44)



Black (06)



Graphite (45)



Gray (41)



Sand (77)



Red Apple (43)



Tile (78)



Yellow (16)



Olive (76)



Night Blue(32)

## Plastics Match

---



White Off (44)



Black (06)



Graphite (45)



Gray (41)



Brown (46)



Red Apple (43)



Tile (78)



Yellow (16)



Green Moss (104)



Olive (76)



Night Blue (32)



Deep Blue (103)



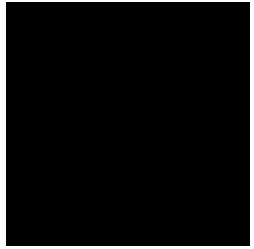
Hibiscus Pink (102)



Pink Nude (105)

## Plastic Surfaces (PP)

---



Black



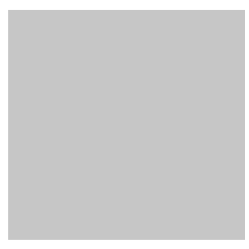
Gray

## Metallic Surfaces

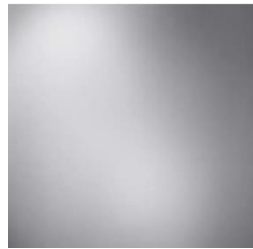
---



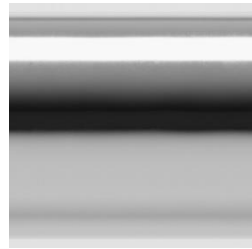
Universal Black (101)



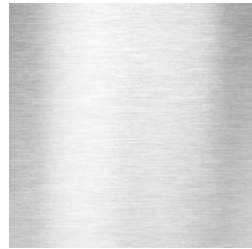
Bright Gray (12)



Semi Matte Silver (13)



Chromed (05)



Aluminum (07)



Ultra Matte  
Graphite (80)



Ultra Matte  
Red (85)



Ultra Matte  
Tile (84)



Ultra Matte  
Yellow (86)



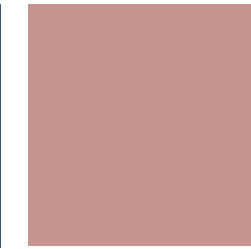
Ultra Matte  
Sand (83)



Ultra Matte  
Olive (82)



Ultra Matte  
Blue (81)



Ultra Matte  
Soft Pink (100)

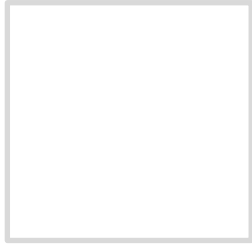


Ultra Matte  
White (79)

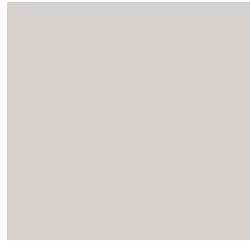


# Melamine Surfaces

---



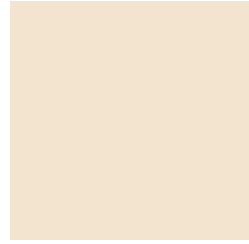
White (01)



Gray (02)



Black (05)



Eggshell (04)



Light Wood (24)



Hanover Oak (27)



Munich Oak (28)

# NOTES

- The standard tolerable variation in fabric color tones from one print run to another is 10%.
- Check physical samples with our resellers and/or representatives.
- Other coating patterns available upon request.

# Warranty Term

---

According to Paragraph 2 of Article 26 of the Consumer Protection Code - Law 8078 of September 11, 1990 "The right to complain about apparent defects or that are easy to verify expires in 90 (ninety) days, in the case of service provision and durable products". However, **Cavaletti S/A Professional Seating extends the warranty of its products, for a period of 6 (six) years, including the 90 (ninety) days of legal warranty, against manufacturing defects in the metallic structure and plastic parts with structural function. . And 1 (one) year for the other components and chrome finish, considering a work shift of 8 (eight) hours per day, by people weighing up to 110 kg, provided that normal conditions of use are observed, observing the Usage recommendations and Conservation of the product, contained in this Manual.**

The warranty period is valid with the presentation of the invoice for the product and is counted from the date of issuance thereof.

**For work shifts longer than 8 (eight) hours a day, the warranty time decreases proportionally, for example, for shifts of 12 (twelve) hours a day, the warranty is 4 (four) years and for shifts of 24 (twenty-four) daily hours the warranty is 2 (two) years.**

## **This term COVERS:**

Plastic parts with structural function and metal components with manufacturing defects.

## **This term DOES NOT COVER:**

- Defects caused by improper use of the product, lack of minimum care, incorrect assembly or installation, maintenance performed by third parties without prior authorization from Cavaletti.
- Parts or components with natural wear due to the use of the product, such as: casters, regulators, bushings, gliders, fabrics, mesh, vinyl materials, natural leather, colored plastics, foams, and other coating and/or finishing materials.
- Difference in tone between coatings of products purchased on different dates.
- Deformations in foams used in seats and backrests of up to 10% of their original size are considered normal and appear with use.
- Damage caused by exposure to the weather, use of the product outdoors or with excessive humidity/temperature, as well as use on uneven floors.
- Chrome finish on plastic parts.
- Damage caused by natural accidents, such as flooding, fire; sea air, etc.;
- Damage incurred during transport carried out by the customer or carrier under the customer's responsibility.
- Changes made to the products by the owner and/or unauthorized persons.
- Materials supplied by the customer, such as fabrics or other materials that are not standard in the Cavaletti line.

In the event of a defect, in order to benefit from the guarantee, the consumer must contact the company where he purchased the product, bearing his invoice. A product will not be considered defective and Cavaletti will not be obliged to exchange it, if it is not installed or used as recommended in the instructions for use in this manual.

Cavaletti is at your disposal to clarify any doubts regarding its products and services, as well as to guide you in the best way on warranty procedures or on the conservation of your product.



PROFESSIONAL SEATING

Value on  
making more.  
SINCE 1974