

**Cavaletti**

PROFESSIONAL SEATING



**Cavaletti PRO**





## Cavaletti Pro

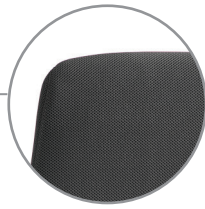
Dynamic workspaces call for comfortable seating, practical and durable, that integrate with the architecture of each environment. Created to serve operational and management areas, the Pro line offers solutions to intelligently serve a wide variety of users, with a high level of comfort and functionality.



# CHARACTERISTICS



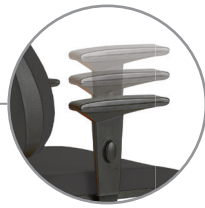
**HEAD SUPPORT**  
Headrest with 5 adjustment positions and 35 mm of travel. With generous dimensions, it offers greater support to the cervical region.



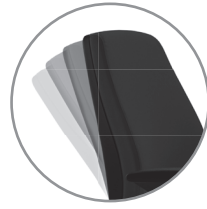
**COATINGS**  
Selected fabrics with double seams in the options: Polyester, Politex, Blend, Grid, Haven, Space, CEC - Stilo, Vinyl and Natural Leather.



**BACKREST**  
High (L AC), High (L), High (Operational) and Medium (Operational) backrests, with anatomical curvatures for Better spinal support.



**ARMRESTS**  
Adjustable Arms SL, SL New PU, SL New PP (all with option of Side Adjustment) or 3D (adjustable in height, advance and PU support angle).



**MECHANISMS**  
4-stage Synchron mechanism with front handle tension adjustment (with seat depth adjustment option), Relax Mechanism or Seat Recline System Backrest (SRE). Turntable option for Meeting Rooms (SR).



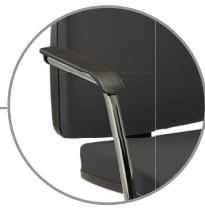
**SEAT**  
Seat in injected foam with gas height adjustment. Optional Depth adjustment when Synchron mechanism is available.



**BASES**  
Base options in Aluminum or Nylon, with 65mm castors in Nylon or PU. Steel Base with Cover, 50mm Casters Only in Nylon or PU.



**38001 L AC**  
**Swivel Highback**  
Synchron  
SL Armrests  
Aluminum Base



**STRUCTURES**  
Fixed bases in the Swing option with or without Integrated Arms (S or SI) and Stabilizer glides Chrome or Black Universal Finish.

# CONFIGURATIONS



**38001 L AC**  
**Swivel Highback**  
Synchron  
SL Armrests  
Steel Base with Cover



**38001 L**  
**Swivel Highback (Task)**  
Synchron  
SL New PU Arm  
Steel Base with Cover



**38001 SRE**  
**Swivel Midback**  
Backrest Recline System  
SL Armrests  
Steel Base with Cover



**38003 SRE**  
**Swivel Midback (Task)**  
Backrest Recline System  
SL Armrests  
Steel Base with Cover



**38022 SRE**  
**Swivel Stool**  
Backrest Recline System  
SL Armrests  
Steel Base with Cover



**38006 SI**  
**Visitor**  
SI Structure  
Integrated Arms



**38006 S**  
**Visitor**  
S Structure



**38007 SI**  
**Visitor Midback**  
SI Structure  
Integrated Arms



**38007 S**  
**Visitor Midback**  
S Structure

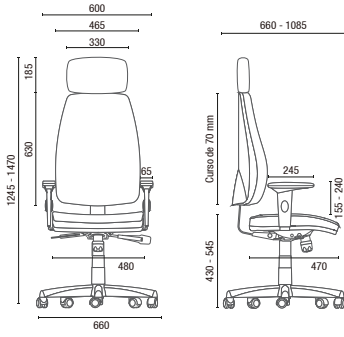


**38010**  
**Bench**  
Back glides with adjustment

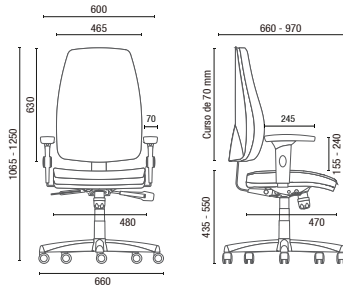


**38010**  
**Bench**  
American Intercalated Arms  
Back glides with adjustment

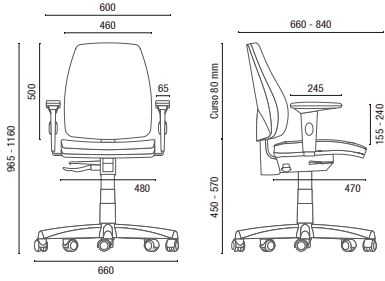
# TECHNICAL DRAWINGS



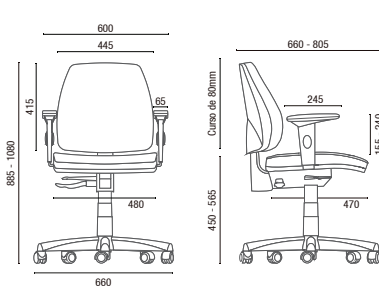
38001 L AC SYNCRON **Swivel Highback**



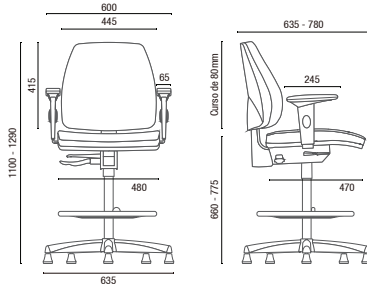
38001 L SYNCRON **Swivel Highback (task)**



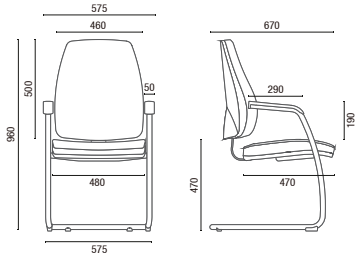
38001 SRE **Swivel Midback**



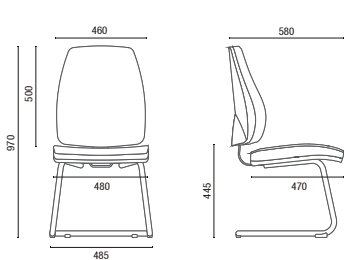
38003 SRE **Swivel Midback (task)**



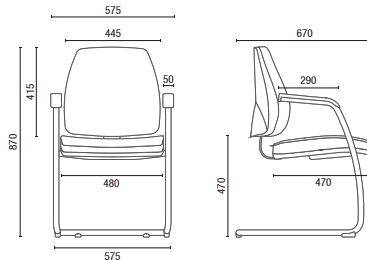
38022 SRE **Swivel Stool**



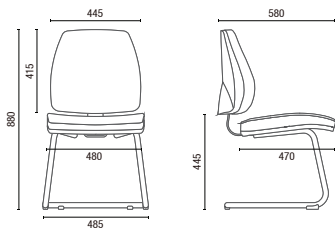
38006 SI **Visitor Integrated Armrests**



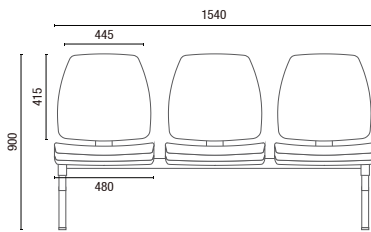
38006 S **Visitor**



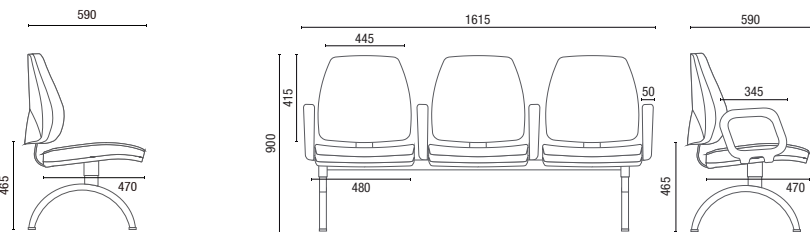
38007 SI **Visitor Midback Integrated Armrests**



38007 S **Visitor Midback**



38010 **Bench**  
Widths without Arm:  
2 seats - 1015mm  
3 seats - 1540mm  
4 seats - 2055mm  
5 seats - 2600mm



38010 **Bench**  
American Interleaved Arm Widths:  
2 seats - 1085mm  
3 seats - 1615mm  
4 seats - 2130mm  
5 seats - 2670mm

NOTE: Extreme measurements obtained without using a load gauge.



Cavaletti S/A Professional Seating  
Street Dr. Hiram Sampaio, 550  
Erechim/RS Brasil 99.706-461  
Fone/Fax: (54) 3520.4100  
atendimento@cavaletti.com.br  
www.cavaletti.com.br



The mark of responsible forestry

\*Certified Products with Ecological Label (Quality - ABNT - Environmental) or ABNT NBR 13962 Standard, under consultation with the Commercial Department - Public Sector.